



# BELDING

HAND CRAFTED IN CALIFORNIA

---

A CUSTOM GOLF AND LUGGAGE BRAND

CANADA 2025 • WHOLESALE ONLY

# BELDING

RANGE & MERCH UNITS



**10" DRAWSTRING SHAG**

- Holds 40 balls
- 2 logo locations



**14" DRAWSTRING SHAG**

- Holds 60 balls (or one bottle of wine)
- 2 logo locations



**DOUBLE HANDLE**

- Holds 70 balls
- 2 logo locations



**HARD BOTTOM BUCKET**

- Holds 125 – 150 balls
- 2 logo locations



**OVERSIZED HARD BOTTOM BUCKET**

- Holds 150 – 200 balls
- 2 logo locations



**DEN CADDY**

- Holds 200 – 250 balls
- 10" top, 20" tall
- Multiple logo locations



**SOFT BOTTOM BUCKET**

- Holds 60 balls
- 2 logo locations



**STAFF DEN CADDY**

- Holds 200 – 250 balls
- 10" top, 20" tall
- Multiple logo locations

# BELDING

GOLF BAGS



## GLOBAL TOUR BAG

CATEGORY	Cart bag
SIZE	9.5", 6 way custom top
POCKETS	6 pockets
ZIPPER COLOR	Black, White, Brown
HARDWARE COLOR	Black, Silver, Antique Gold, Gold
INCLUDES	Hood and strap

## PXL

CATEGORY	Cart bag, 8.5" or 9.5" top
DECORATION	Full panoramic inlay
POCKETS	6 pockets
ZIPPER COLOR	Black, White, Brown
HARDWARE COLOR	Black, Silver, Antique Gold, Gold
INCLUDES	Hood and strap

## TOUR STAFF

CATEGORY	Cart bag
SIZE	8.5", 9.5" or 11" top
POCKETS	5 pockets
ZIPPER COLOR	Black, White, Brown
HARDWARE COLOR	Black, Silver, Antique Gold, Gold
INCLUDES	Hood and strap



# BELDING

GOLF BAGS



## PASSPORT

CATEGORY	Cart bag
SIZE	8.5" or 9.5" top
POCKETS	8 pockets
ZIPPER COLOR	Black, White, Brown
HARDWARE COLOR	Black, Silver, Antique Gold, Gold
INCLUDES	Hood and strap



## BUSHWHACKER

CATEGORY	Cart bag
SIZE	8.5" or 9.5" top
POCKETS	7 pockets
ZIPPER COLOR	Black
HARDWARE COLOR	Black
INCLUDES	Hood and strap



## CAROUSEL

CATEGORY	Cart bag
SIZE	8.5" or 9.5" top
POCKETS	5 pockets
ZIPPER COLOR	Black, White, Brown
HARDWARE COLOR	Black, Silver, Antique Gold, Gold
INCLUDES	Hood and strap

# BELDING

GOLF BAGS



## SILHOUETTE

CATEGORY	Cart bag
SIZE	8.5" or 9.5" top
POCKETS	4 pockets plus valuables pouch
ZIPPER COLOR	Black, White, Brown
HARDWARE COLOR	Black, Silver, Antique Gold, Gold
INCLUDES	Hood and strap



## CLUBHOUSE

CATEGORY	Cart bag
SIZE	8.5" or 9.5" top
POCKETS	4 pockets
ZIPPER COLOR	Black, White, Brown
HARDWARE COLOR	Black, Silver, Antique Gold, Gold
INCLUDES	Hood and strap



## VINTAGE

CATEGORY	Carry bag
SIZE	7" top
POCKETS	1 pocket
ZIPPER COLOR	Black, White, Brown
HARDWARE COLOR	Black, Silver, Antique Gold, Gold
INCLUDES	Hood, strap, and leather trim

# BELDING

TRAVEL & LEISURE



## CARRY ALL

CATEGORY	Soft luggage
SIZE	18" x 12" x 8"
POCKETS	5 compartments
ZIPPER	Black, White
HARDWARE	Black



## FLIGHT BAG

CATEGORY	Soft luggage
SIZE	18" x 12" x 9"
POCKETS	4 compartments
ZIPPER	Black, White, Brown
HARDWARE	Black, Silver, Antique Gold, Gold



## SATCHEL

CATEGORY	Soft luggage
SIZE	21" x 10" x 10"
POCKETS	5 compartments
TRIM	Leather
ZIPPER	Black, White, Brown
HARDWARE	Black, Silver, Antique Gold, Gold



## TRAVEL BAG

CATEGORY	Soft luggage
SIZE	21" x 11" x 10"
POCKETS	2 compartments
ZIPPER	Black, White, Brown
HARDWARE	Black, Silver, Antique Gold, Gold

# BELDING

GOLF BAGS



## PUTTER COVERS

- Available in leather or vinyl
- Programs available



## DRAWSTRING VALUABLES BAG

- Available in leather only
- 7" x 5" x 2"



## CIRCA HEAD COVERS

- Available in singles (driver size), or sets of 3, 4, and 5
- Available in leather only



## LONGNECK HEAD COVERS

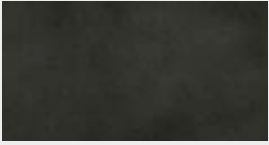
- Available in singles (driver size), or sets of 3, 4, and 5
- Hybrids also available
- Available in most colors and fabrics



# BELDING

FABRICS & COLORS

## LEATHER



BLACK



BURGUNDY



COGNAC



DARK BROWN



NAVY

## PREMIUM SYNTHETIC LEATHER



BLACK



DARK BROWN



DARK GREY



GREEN



KHAKI



LIGHT GREY



NAVY



PINK



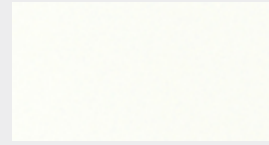
PURPLE



RED



ROYAL BLUE



WHITE



YELLOW



BLACK GLAZE



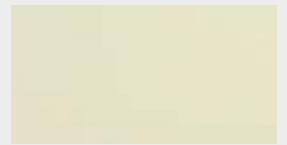
GREEN GLAZE



NAVY GLAZE



RED GLAZE



WHITE GLAZE

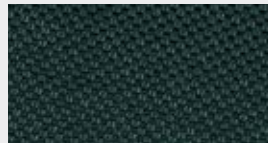
## CORDURA 1000D NYLON



BLACK



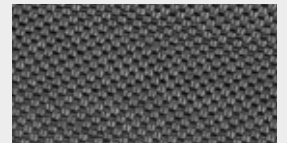
DARK GREY



GREEN



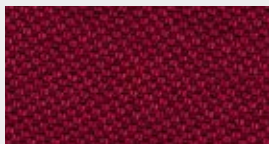
KHAKI



LIGHT GREY



NAVY



RED



ROYAL BLUE



TAN



WHITE



DISTRIBUTED IN CANADA BY

THE  
**WESTPORT**  
COMPANY

***BC***

*Steve Mason*

1.778.251.2784

stevemasonsales@gmail.com



***Alberta***

*Daniela Pacheco*

1.587.999.1060

dani-pacheco@telus.net



***Ontario***

*Paul Kraus*

1.416.884.6841

paulkraus55@gmail.com



***Quebec & Maritimes***

*Emmanuel Autran*

1.514.262.5994

emmanuel.autran@agenceeea.com



***Head Office***

*Aaren McMahon*

1.437.246.8821

aaren@thewestportcompany.ca



3250 BLOOR ST WEST, SUITE 600, TORONTO, ON M8X 2X9

THEWESTPORTCOMPANY.CA