



WORKBOOK

GOLF

SS25



cross|sportswear

WHOLESALE ONLY

SPRING / SUMMER 2025 COLLECTION

MENS GOLF SS25

CROSS SPORTSWEAR



Navy - 498



Black - 900

ART NO 1119000-

M PRO JACKET

A technical and very useful golf jacket that will easily manage tough weather conditions. The Pro rain jacket is extremely soft and noiseless. It is lightweight and very packable, which makes it easy to bring in your bag (or always keep in your bag in case of unexpected rain). It has a timeless design which gives it a classic look. Equipped with two layers, a 4-way stretch and a waterproofing of 20 000 mm Pro will keep you dry on rainy days at the course. The jacket has a regular fit. A classic cut with a timeless look. Unsure of what size to choose? Take a look at the size chart for this product.

SIZES

S / M / L / XL / XXL / XXXL



FEATURES

Fabric: 100% polyester
Laminate: 100% polyurethane
Water pressure: 20 000 mm
Breathability: 25 000 g/m²/24h
Size: S-XXXL
Fit: Regular

DETAILS

- Two fleece lined front pockets with zippers and protective plackets
- Inner concealed zipper for creasing
- Pre shaped sleeves
- Adjustable sleeve hem
- Bottom hem adjuster
- Bemis tape details/Taped seams
- Micro fleece chin guard
- Shaped and adjustable collar
- Adhesive inner placket
- Adhesive front placket



Navy - 498



Black - 900

ART NO RE 1227800-
 ART NO SH 1227900-
 ART NO LO 1228000-

M PRO PANTS

Extremely soft and noiseless rain pants that will keep you dry both off and on the course. Pro rain pants are equipped with a 2-layer 4-way FTX stretch for superb comfort and freedom of movement. They are lightweight and packable, which makes it easy to bring them in your bag (or always keep in your bag in case of unexpected rain). Designed so that you can focus on what matters, your game. The pants come in different inseam lengths. SH = Short (77 cm), RE = Regular (82 cm) and LO = Long (87 cm). The pants have a regular fit. A classic cut with a timeless look. Unsure of what size to choose? Take a look at the size chart for this product.

SIZES

S / M / L / XL / XXL / XXXL

FEATURES

Fabric: 100% polyester
Laminate: 100% polyurethane
Water pressure: 20 000 mm
Breathability: 25 000 g/m²/24h
Size: S-XXXL
Fit: Regular
Inseam: 82 CM

DETAILS

- Two front pockets with zippers behind plackets
- Back security pocket
- Elastic in back waistband for perfect fit
- Pre shaped legs
- Long leg opening with zippers for easy on-off even with shoes
- Cordura reinforcement at back of bottom leg end
- Velcro tab adjuster at leg end





Navy - 498

Black - 900

ART NO 1101500-

M HURRICANE JACKET

SIZES

S / M / L / XL / XXL / XXXL

Extremely lightweight and affordable rain jacket. Hurricane jacket has a fashionable look with a classic fit. The jacket is a 2,5 layer rain jacket with a 4-way stretch. With its pre shaped sleeves, Hurricane will allow for maximum freedom of movement. The rain jacket has a waterproofing of 15 000 mm and will most definitely keep the water away on rainy days. An easy choice! The jacket has a narrow fit that gives a slim silhouette. Unsure of what size to choose? Take a look at the size chart for this product.

FEATURES

Fabric: 100% polyester
Laminate: 100% polyurethane
Water pressure: 15 000 mm
Breathability: 15 000 g/m2/24h
Size: S-XXXL
Fit: Narrow

DETAILS

- Minimum number of seams
- Pre shaped sleeves
- Shaped and adjustable collar
- YKK Aquaguard front zipper
- Two front pockets with YKK WR zippers
- Extra lining in the arms for maximum comfort
- Bottom hem adjuster
- Lycra tape sleeve hem
- Micro fleece chin guard
- Adhesive inner placket
- Bemis tape details



Navy - 498



Black - 900



ART NO RE 1233600-
 ART NO SH 1239800-
 ART NO LO 1239900-

SIZES

S / M / L / XL / XXL / XXXL

M HURRICANE PANTS

Extremely lightweight and affordable rain pants. The Hurricane rain pants are very soft and noiseless. They are equipped with a 2,5 layer 4-way FTX stretch for superb comfort. They have a high level of breathability and are, with its sealed seems, waterproof. A very useful pair of rain pants for tough weather conditions on the course. The pants come in different inseam lengths. SH = Short (77 cm), RE = Regular (82 cm) and LO = Long (87 cm). The pants have a narrow fit that gives a slim silhouette. Unsure of what size to choose? Take a look at the size chart for this product.

FEATURES

Fabric: 100% polyester
Laminate: 100% polyurethane
Water pressure: 15 000 mm
Breathability: 15 000 g/m2/24h
Size: S-XXXL
Fit: Narrow
Inseam: 82 CM

DETAILS

- Minimum number of seams
- Velcro side adjuster at waist
- Back security pockets
- Pre shaped legs
- Velcro tab adjuster at leg end
- Cordura reinforcement at bottom leg end
- Long leg opening with zippers for easy on-off even with shoes





Black - 900



Navy - 498



ART NO 1101600-

M CLOUD JACKET

Rain jacket made with 100% recycled polyester. Cloud has a sporty style with a classic fit and is just as functional as comfortable. It is a 2-layer rain jacket with a 2-way stretch. The waterproofing is 10 000 mm and the breathability is 10 000 g/m²/24h. Cloud has pre shaped sleeves for comfort and maximum freedom of movement. An easy choice for days when the weather forecast predicts rain. The jacket has a regular fit. A classic cut with a timeless look.

SIZES

S / M / L / XL / XXL / XXXL

FEATURES

Fabric: 100% recycled polyester
Laminate: 100% polyurethane
Water pressure: 10 000 mm
Breathability: 10 000 g/m²/24h
Size: S-XXXL
Fit: Regular

DETAILS

- Pre shaped sleeves
- Shaped and adjustable collar
- Two fleece lined front pockets with zippers and protective plackets
- Bottom hem adjuster
- Adjustable sleeve hem
- Micro fleece chin guard



Navy - 498



Black - 900



ART NO RE 1250900-
 ART NO SH 1251000-
 ART NO LO 1251100-

M CLOUD PANTS

Rain pants made with 100% recycled polyester. Cloud has a sporty style with a classic fit and is just as functional as comfortable. It is a 2-layer rain pant with a 2-way stretch. The waterproofing is 10 000 mm and the breathability is 10 000 g/m²/24h. Cloud has pre shaped legs for comfort and maximum freedom of movement. An easy choice for days when the weather forecast predicts rain. The pants come in different inseam lengths. SH = Short (77 cm), RE = Regular (82 cm) and LO = Long (87 cm). The pants have a regular fit. A classic cut with a timeless look.

SIZES

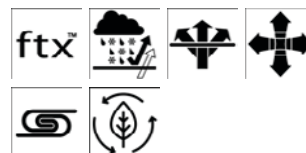
S / M / L / XL / XXL / XXXL

FEATURES

Fabric: 100% recycled polyester
Laminate: 100% polyurethane
Water pressure: 10 000 mm
Breathability: 10 000 g/m²/24h
Size: S - XXXL
Fit: Regular
Inseam: 82 cm

DETAILS

- Two front pockets with storm plackets
- Back security pockets with storm placket
- Velcro tab adjuster at leg end
- Long leg opening with zippers for easy on-off even with shoes
- Pre shaped legs





Navy - 498

Black - 900

ART NO 1101800-

M HYBRID VEST

SIZES

S / M / L / XL / XXL / XXXL

Hybrid vest is a lightweight and packable vest, making it an easy vest to bring in your golf bag (or always keep in your bag as an extra layer for colder days on the course). The vest has a warm down padding in the front and the back. The perfect combination of core warmth and comfortable layering that will keep you warm on the course without sacrificing your game. Great to layer underneath a jacket or on top of a sweater. Hybrid is the golf vest you didn't know you needed but will bring to every game once you have it in your wardrobe. The vest has a narrow fit that gives a slim silhouette. Unsure of what size to choose? Take a look at the size chart for this product.

FEATURES

Fabric: Shell 1: 100% polyester / Shell 2: 100% polyamide
Fill power: 90/10 down/feather
Laminate: 100% polyurethane
Size: S-XXXL
Fit: Narrow

DETAILS

- 90/10 down/feather padded front and back
- YKK Vislon front zipper
- Two hand pockets with zippers
- Bottom hem adjuster
- Lycra tape at armhole
- Micro fleece chin guard



Navy - 498

Black - 900

ART NO 1978441-

M ATHLETIC HALF ZIP

SIZES

S / M / L / XL / XXL / XXXL

A sporty elegant technical half zip sweater in lightweight material. Suitable both on and off course in any activity that requires a stretchy second layer. Designed for your maximum comfort and for your active lifestyle.

FEATURES

Fabric: 88% RECYCLED POLYESTER 12% ELASTANE
Size: S-XXXL
Fit: Regular

DETAILS

- Coil zip at front
- Tube collar
- Print on BACK





White - 106

Navy - 498

ART NO 1946900-

M/W ARMOUR TOP

A super soft slim fit warming 1st layer for cold days or used as a sun protective 1st layer with 30-50+ UPF UV-protection. Made from recycled polyester and bamboo charcoal, this technical psweater (mainly thanks to the material bamboo) has natural anti-odor properties and is also antibacterial. In addition, the bamboo prevents the polo shirt from becoming lumpy. A durable and simple choice for the conscious golfer. Unsure of what size to choose? Take a look at the size chart for this product.

SIZES

XS / S / M / L / XL / XXL / XXXL

FEATURES

Fabric: 70% Recycled polyester 30% White bambu charcoal polyester
Size: XS-XXXL
Fit: Slim

DETAILS

- Printed logo
- Unisex
- 30-50+ UPF UV-protection



White - 106

Navy - 498

ART NO 1951300-

M/W ARMOUR PANTS

Super soft slim fit warming 1st layer for cold days or used as a sun protective 1st layer with 30-50+ UPF UV-protection. Unsure of what size to choose? Take a look at the size chart for this product.

SIZES

XS / S / M / L / XL / XXL / XXXL

FEATURES

Fabric: 70% Recycled polyester 30% White bamboo charcoal blend polyester
Size: XS-XXXL
Fit: Slim

DETAILS

- Printed logo





Chambray Blue - 708



True Blue - 730



Four Leaf Clover - 850



Black - 900

ART NO 14006298

M GREG CREW NECK

SIZES

S / M / L / XL / XXL / XXXL

Greg Crew Neck is a finely knitted mock neck sweater made in a fully-fashion knit technique. The threads are 12 gauge plain knit in 100% cotton, which means they are on the finer side. Made in Italy in a regular fit, this sweater works just as well on the golf course as it does over a shirt at work. A classic cut with a timeless look.

FEATURES

DETAILS

Fabric: 100% COTTON • Plain knit

Size: S-XXXL

Fit: Regular



Chambray Blue - 708



True Blue - 730



Four Leaf Clover - 850



Black - 900

ART NO 14008298

M GORDON 1/2 ZIP

SIZES

S / M / L / XL / XXL / XXXL

The Gordon 1/2 zip is a t-neck sweater made in fully-fashion knit technique with a zipper in the front. The threads are 12 gauge plain knit in 100% cotton, which means they are on the finer side. Made in Italy in a regular fit, this sweater works just as well on the golf course as it does over a shirt at work. A classic cut with a timeless look.

FEATURES

DETAILS

Fabric: 100% COTTON • Plain knit

Size: S-XXXL • 1/2 zip front

Fit: Regular



Chambray Blue - 708

True Blue - 730

Four Leaf Clover - 850

Black - 900

ART NO 14020298

M GARY V-NECK

Gary v-neck is a finely knitted mock neck sweater made in a fully-fashion knit technique. The threads are 12 gauge plain knit in 100% cotton, which means they are on the finer side. Made in Italy in a regular fit, this sweater works just as well on the golf course as it does over a shirt at work. A classic cut with a timeless look.

FEATURES DETAILS

Fabric: 100% COTTON • Plain Knit

Size: S-XXXL

Fit: Regular

SIZES

S / M / L / XL / XXL / XXXL



White - 106



Mandevilla Red - 405



Navy - 498



Chambray Blue - 708



Black - 900



Melaleuca - 855

ART NO 13100289

M BRIAN POLOSHIRT

It does not get any more classic than Brian golf polo. A wardrobe staple that is a must in every golfer's wardrobe. With a classic fit in plain colors with ribbed collar and sleeve ends, it's made with recycled polyester. The fabric is obtained by melting down existing plastic, such as fishing nets or plastic bottles and re-spinning it into new polyester fiber. A better choice for the conscious golfer.

FEATURES

Fabric: 100% RECYCLED

POLYESTER

Size: S-XXXL

Fit: Regular

DETAILS

- Buttons at front
- 1 x 1 rib at collar and cuffs
- Suitable for creasing

SIZES

S / M / L / XL / XXL / XXXL



White - 106



Berry Wine - 480



Navy - 498



Black - 900



Skyway - 707

ART NO 13102290

M COLLIN POLOSHIRT

Collin is a classic polo shirt in a single-jersey fabric. It's clean looking and lightweight with buttons at front and silicone-logo on sleeve. This golf polo is regular fit and works for any activity demanding stretch, moisture wicking ability. A classic cut with a timeless look.

SIZES

S / M / L / XL / XXL / XXXL

FEATURES

Fabric: 70%RECYCLED POLYESTER
30%POLYESTER
Size: S-XXXL
Fit: Regular

DETAILS

- Buttons at front
- Suitable for creasing



White - 106



Navy - 498



Chambray Blue - 708



Melaleuca - 855

ART NO 13104289

M CHRIS POLOSHIRT

SIZES

S / M / L / XL / XXL / XXXL

The Chris polo is a classic lightweight polo in a single-jersey fabric and will most likely be the favorite in your golf wardrobe. The collar is in main fabric with buttons at front and silicone-logo on sleeve. It is a sporty and fashionable polo made from recycled polyester which is obtained by melting down existing plastic, such as fishing nets or plastic bottles and re-spinning it into new polyester fiber. A conscious choice with a timeless look.

FEATURES

Fabric: 100% RECYCLED POLYESTER
Size: S-XXXL
Fit: Regular

DETAILS

- Embroidery Logo on chest
- Buttons at front
- colored stripe rib at cuffs



White A01 - 118



Navy A01 - 407



Black Lava A01 - 914



Melaleuca - 855

ART NO 13106291

M AUSTIN POLOSHIRT

SIZES

S / M / L / XL / XXL / XXXL

Austin Polo is an all over printed golf polo with a soft touch, buttons at front and silicone-logo on the sleeve. The collar is in main fabric and same print pattern as the rest of the shirt. It has a contemporary style in single-jersey fabric with a classic fit. Perfect for any activity demanding stretch, moisture wicking ability and feeling cool.

FEATURES

Fabric: 92% RECYCLED POLYESTER 8% ELASTANE
Size: S-XXXL
Fit: Regular

DETAILS

- Buttons at front
- All over print
- Suitable for creasing



Melaleuca - 855



Black - 900

ART NO 13108291

M ADAM POLOSHIRT

SIZES

S / M / L / XL / XXL / XXXL

Adam is a stylish golf polo in a contemporary style with cut & sew front in single-jersey material. The collar is in main fabric with buttons at front and silicone-logo on the chest. It's regular fit and works perfectly for any activity demanding stretch, moisture wicking ability and feeling cool.

FEATURES

Fabric: 92% RECYCLED
POLYESTER 8% ELASTANE
Size: S-XXXL
Fit: Regular

DETAILS

- Buttons at front
- Print on front



Berry Wine - 480



Melaleuca - 855



Black - 900



Pebble Grey - 814

ART NO 13116291

M ANDREW POLOSHIRT

SIZES

S / M / L / XL / XXL / XXXL

Andrew is a golf polo in a single-jersey, fabric with collar in main fabric and buttons at front. The logo is embroidered on chest and the arms carries stylish tubular piping in contrast on sleeves which makes for a cool vintage golf look. It is a sporty and fashionable polo in regular fit, made from recycled polyester. The recycled polyester is obtained by melting down existing plastic, such as fishing nets or plastic bottles and re-spinning it into new polyester fiber. A conscious choice for the modern golfer.

FEATURES

Fabric: 92% RECYCLED
POLYESTER 8% ELASTANE
Size: S-XXXL
Fit: Regular

DETAILS

- Buttons at front
- Contrast color stripe on cuff
- Embroidery Logo on chest



White - 106



Chambray Blue - 708



Black - 900

ART NO 13112290

M BRENDON POLOSHIRT

SIZES

S / M / L / XL / XXL / XXXL

Brendon is a golf polo with allover faded print in a contemporary in single-jersey fabric. The collar is in main fabric, buttons at front and silicone-logo on sleeve. It's regular fit and works perfectly for any activity demanding stretch, moisture wicking ability and feeling cool.

FEATURES

Fabric: 70%RECYCLED POLYESTER
30%POLYESTER

Size: S-XXXL

Fit: Regular

DETAILS

- Buttons at front
- Print on front



White - 106



Mandevilla Red - 405



True Navy - 760



Black - 900

ART NO 13114291

M COREY POLOSHIRT

SIZES

S / M / L / XL / XXL / XXXL

Corey is a mock-neck T-shirt with allover print on chest in a single-jersey fabric. It has a stylish modern logo, mock-neck collar in main fabric and silicone-logo on chest. It's regular fit and works perfectly for any activity demanding stretch, moisture wicking ability and feeling cool.

FEATURES

Fabric: 92% RECYCLED
POLYESTER 8% ELASTANE

Size: S-XXXL

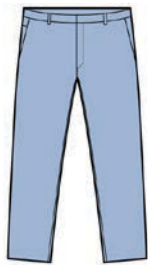
Fit: Regular

DETAILS

- Round collar no buttons
- Print Stripe on front



Navy - 498



Chambray Blue - 707



Black - 900



Agate Gray - 903

ART NO 12128294

M BYRON LUX CH 34

SIZES

W28/L34 / W30/L34 / W31/L34 / W32/L34 / W33/L34 / W34/L34 / W36/L34 / W38/L34 / W40/L34

Our lightweight Lux chinos are designed for maximum freedom of movement so that you can focus on what matters, your game. The chinos are made of a highly breathable fabric with a 2-way stretch. Lux chinos also have a stretch construction at the waist for superb comfort. Equipped with two front hand pockets and two back pockets. The Lux golf chinos also have a small tee pocket on the outside of the right side pocket because, let's face it, it is always good to have a couple of extra tees on hand. The chinos are also mostly made with recycled polyester. Recycled Polyester is obtained by melting down existing plastic, such as fishing nets or plastic bottles and re-spinning it into new polyester fiber. A better choice for the conscious golfer. The chinos come in different inseam lengths. 32 = 79 cm, 34 = 84 cm and 36 = 89 cm. The chinos have a regular fit. A classic cut with a timeless look. Unsure of what size to choose? Take a look at the size chart for this product.

FEATURES

Fabric: 75%RECYCLED POLYESTER
25%POLYESTER
Size: 28-40
Fit: Regular
Inseam: 34" - 83.5 cm

DETAILS

- Two front hand pockets
- Small tee pocket outside right side pocket
- Two back pockets
- Stretch construction at waist



Navy - 498



Black - 900



Newsprint - 907

ART NO 12130295

M BYRON TECH CH 34

SIZES

W28/L34 / W30/L34 / W31/L34 / W32/L34 / W33/L34 / W34/L34 / W36/L34 / W38/L34 / W40/L34

The Byron Tech chinos are our best-selling pants of all time. It is a customer favorite and a staple in every golfer's wardrobe. Made out of a technical and water-repellent polyester, they are the ultimate golf chinos. The 2-way stretch fabric allows for maximum freedom of movement. They are designed for a timeless fit, you can take these pants straight from the golf course to work. Equipped with two front hand pockets and two back pockets. The Byron Tech golf chinos also have a small tee pocket on the outside of the right side pocket because, let's face it, it is always good to have a couple of extra tees on hand. Byron Tech chinos also have a stretch construction at the waist for superb comfort. The chinos come in different inseam lengths. 32 = 79 cm, 34 = 84 cm and 36 = 89 cm. The chinos have a regular fit. A classic cut with a timeless look. Unsure of what size to choose? Take a look at the size chart for this product.

FEATURES

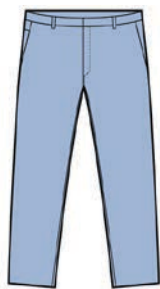
Fabric: 62%RECYCLED POLYESTER
38%POLYESTER
Size: 28-40
Fit: Regular
Inseam: 34" - 83.5 cm

DETAILS

- Two front hand pockets
- Small tee pocket outside right side pocket
- Two back pockets
- Stretch construction at waist
- 2-way stretch



Navy - 498



Chambray Blue - 707



Black - 900



Agate Gray - 903

ART NO 12132294

M RALPH PANT 34

The Ralph pant is a new stylish golf pant that combines performance with elegance. It has a new improved fit with more volume and wider leg together with darts and back-pockets. There's also a small tee holder outside right side pocket. The recycled polyester the pants are made from is obtained by melting down existing plastic, such as fishing nets or plastic bottles and re-spinning it into new polyester fiber. A conscious choice with a timeless look.

FEATURES

Fabric: 75%RECYCLED POLYESTER
25%POLYESTER

Size: 28-40

Fit: Regular

Inseam: 32" - 82 cm

DETAILS

- Two front hand pockets
- Small tee pocket outside right side pocket
- Two back pockets

SIZES

W28/L34 / W30/L34 / W31/L34 / W32/L34 / W33/L34 /
W34/L34 / W36/L34 / W38/L34 / W40/L34



Navy - 498



Chambray Blue - 707



Black - 900



Agate Grey - 903

ART NO 12600294

M BYRON LUX SHORTS

Our lightweight Lux shorts are designed for maximum freedom of movement so that you can focus on what matters, your game. Our Lux shorts are made of a breathable fabric with a 2-way stretch. The waist has a stretch construction for superb comfort. Lux shorts have two front hand pockets and two back pockets. They also have a small tee pocket outside the right side pocket because, let's face it, it is always good to have a few extra tees on hand. The shorts are also mostly made with recycled polyester. Recycled Polyester is obtained by melting down existing plastic, such as fishing nets or plastic bottles and re-spinning it into new polyester fiber. A better choice for the conscious golfer. The shorts have a regular fit. A classic cut with a timeless look. Unsure of what size to choose? Take a look at the size chart for this product.

SIZES

28" / 30" / 31" / 32" / 33" / 34" / 36" / 38" / 40"

FEATURES

Fabric: 75%RECYCLED POLYESTER
25%POLYESTER
Size: 28-40
Fit: Regular
Inseam: 23 cm

DETAILS

- Two front hand pockets
- Small tee pocket outside right side pocket
- Two back pockets
- Stretch construction at waist



Navy - 498



Black - 900



Newsprint- 907

ART NO 12604295

M BYRON TECH SHORTS

SIZES

28" / 30" / 31" / 32" / 33" / 34" / 36" / 38" / 40"

Our lightweight Lux shorts are designed for maximum freedom of movement so that you can focus on what matters, your game. Our Lux shorts are made of a breathable fabric with a 2-way stretch. The waist has a stretch construction for superb comfort. Lux shorts have two front hand pockets and two back pockets. They also have a small tee pocket outside the right side pocket because, let's face it, it is always good to have a few extra tees on hand. The shorts are also mostly made with recycled polyester. Recycled Polyester is obtained by melting down existing plastic, such as fishing nets or plastic bottles and re-spinning it into new polyester fiber. A better choice for the conscious golfer. The shorts have a regular fit. A classic cut with a timeless look. Unsure of what size to choose? Take a look at the size chart for this product.

FEATURES

Fabric: 62%RECYCLED POLYESTER
38%POLYESTER
Size: 28-40
Fit: Regular
Inseam: 23 cm

DETAILS

- Two front hand pockets
- Small tee pocket outside right side pocket
- Two back pockets
- Stretch construction at waist



WOMENS GOLF SS25

SPRING / SUMMER 2025 COLLECTION

CROSS SPORTSWEAR



Black - 900



Navy - 498



ART NO 2123300-

W PRO JACKET

SIZES

XS / S / M / L / XL / XXL

A technical and very useful golf jacket that will easily manage tough weather conditions. The Pro rain jacket is extremely soft and noiseless. It is lightweight and very packable, which makes it easy to bring in your bag (or always keep in your bag in case of unexpected rain). It has a timeless design which gives it a classic look. Equipped with two layers, a 4-way stretch and a waterproofing of 20 000 mm Pro will keep you dry on rainy days at the course. The jacket has a regular fit. A classic cut with a timeless look. Unsure of what size to choose? Take a look at the size chart for this product.

FEATURES

Fabric: 100% Polyester
Insulation: 100% Polyester
Laminate: 100 % Polyurethane
Water pressure: 20 000 mm
Breathability: 20 000 g/m2/24h
Size: XS-XXL
Fit: Regular

DETAILS

- Pre shaped sleeves
- Shaped and adjustable collar
- Adhesive front placket
- Two fleece lined front pockets with zippers and protective plackets
- Inner concealed zipper for cresting
- Bottom hem adjuster
- Micro fleece chin guard
- Adhesive inner placket
- Adjustable sleeve hem
- Bemis tape details/Taped seams



Navy - 498



Black - 900

ART NO RE 2229400-
 ART NO SH 2229500-
 ART NO LO 2229500-

W PRO PANTS

SIZES

XS / S / M / L / XL / XXL

Extremely soft and noiseless rain pants that will keep you dry both off and on the course. Pro rain pants are equipped with a 2-layer 4-way FTX stretch for superb comfort and freedom of movement. They are lightweight and packable, which makes it easy to bring them in your bag (or always keep in your bag in case of unexpected rain). Designed so that you can focus on what matters, your game. The pants come in different inseam lengths. SH = Short (75 cm), RE = Regular (80 cm) and LO = Long (85 cm). The pants have a regular fit. A classic cut with a timeless look. Unsure of what size to choose? Take a look at the size chart for this product.

FEATURES

Fabric: 100 % Polyester
Laminate: 100% Polyurethane
Water pressure: 20 000 mm
Breathability: 20 000 g/m2/24h
Size: XS-XXL
Fit: Regular
Inseam: 80 cm

DETAILS

- Two front pockets with zippers behind plackets
- Back security pocket
- Elastic in back waistband for perfect fit
- Velcro tab adjuster at leg end
- Cordura reinforcement at back of bottom leg end
- Long leg opening with zippers for easy on-off even with shoes
- Pre shaped legs





Navy - 498

Black - 900

ART NO 2102500-

W HURRICANE JACKET

SIZES

XS / S / M / L / XL / XXL

Extremely lightweight and affordable rain jacket. Hurricane jacket has a fashionable look with a classic fit. The jacket is a 2,5 layer rain jacket with a 4-way stretch. With its pre shaped sleeves, Hurricane will allow for maximum freedom of movement. The rain jacket has a waterproofing of 15 000 mm and will most definitely keep the water away on rainy days. An easy choice! The jacket has a narrow fit that gives a slim silhouette. Unsure of what size to choose? Take a look at the size chart for this product.

FEATURES

Fabric: 100% Polyester
Laminate: 100% Polyurethane
Water pressure: 15 000 mm
Breathability: 15 000 g/m²/24h
Size: XS-XXL
Fit: Narrow

DETAILS

- Minimum number of seams
- Pre shaped sleeves
- Shaped and adjustable collar
- YKK Water repellent front zipper
- Two front pockets with YKK WR zippers
- Extra lining in the arms for maximum comfort
- Bottom hem adjuster
- Lycra tape sleeve hem
- Micro fleece chin guard
- Adhesive inner placket
- Bemis tape details



Navy - 498



Black - 900

ART NO RE 2238000-
 ART NO SH 2240000-
 ART NO LO 2240100-

W HURRICANE PANTS

SIZES

XS / S / M / L / XL / XXL

Extremely lightweight and affordable rain pants. The Hurricane rain pants are very soft and noiseless. They are equipped with a 2,5 layer 4-way FTX stretch for superb comfort. They have a high level of breathability and are, with its sealed seems, waterproof. A very useful pair of rain pants for tough weather conditions on the course. The pants come in different inseam lengths. SH = Short (75 cm), RE = Regular (80 cm) and LO = Long (85 cm). The pants have a narrow fit that gives a slim silhouette. Unsure of what size to choose? Take a look at the size chart for this product.

FEATURES

Fabric: 100% Polyester
Laminate: 100% Polyurethane
Water pressure: 15 000 mm
Breathability: 15 000 g/m²/24h
Size: XS-XXL
Fit: Narrow
Inseam: 80 cm

DETAILS

- Minimum number of seams
- Pre shaped legs
- Velcro side adjuster at waist
- Back security pockets
- Velcro tab adjuster at leg end
- Long leg opening with zippers for easy on-off even with shoes
- Cordura reinforcement at bottom leg end





Navy - 498

Black - 900

ART NO 2107141-

W CLOUD JACKET

SIZES

XS / S / M / L / XL / XXL

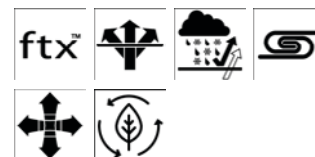
Rain jacket made with 100% recycled polyester. Cloud has a sporty style with a classic fit and is just as functional as comfortable. It is a 2-layer rain jacket with a 2-way stretch. The waterproofing is 10 000 mm and the breathability is 10 000 g/m²/24h. Cloud has pre shaped sleeves for comfort and maximum freedom of movement. An easy choice for days when the weather forecast predicts rain. The jacket has a regular fit. A classic cut with a timeless look. Unsure of what size to choose? Take a look at the size chart for this product.

FEATURES

Fabric: 100% Recycle Polyester
Laminate: 100% polyurethane
Water pressure: 10 000 mm
Breathability: 10 000 g/m²/24h
Size: XS-XXL
Fit: Regular

DETAILS

- Pre shaped sleeves
- Shaped and adjustable collar
- Two fleece lined front pockets with zippers and protective plackets
- Bottom hem adjuster
- Adjustable sleeve hem
- Micro fleece chin guard



Navy - 498



Black - 900

ART NO RE 2252500-
 ART NO SH 2252600-
 ART NO LO 2252700-

W CLOUD PANTS

SIZES

XS / S / M / L / XL / XXL

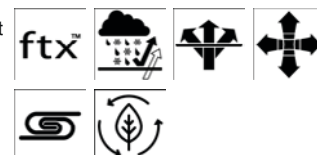
Rain pants made with 100% recycled polyester. Cloud has a sporty style with a classic fit and is just as functional as comfortable. It is a 2-layer rain pant with a 2-way stretch. The waterproofing is 10 000 mm and the breathability is 10 000 g/m²/24h. Cloud has pre shaped legs for comfort and maximum freedom of movement. An easy choice for days when the weather forecast predicts rain. The pants come in different inseam lengths. SH = Short (75 cm), RE = Regular (80 cm) and LO = Long (85 cm). The pants have a regular fit. A classic cut with a timeless look. Unsure of what size to choose? Take a look at the size chart for this product.

FEATURES

Fabric: 100% Recycled polyester
Laminate: 100% Polyurethane
Water pressure: 10 000 mm
Breathability: 10 000 g/m²/24h
Size: XS-XXL
Fit: Regular
Inseam: 80 cm

DETAILS

- Two side pockets with storm plackets
- Back security pockets with storm placket
- Velcro tab adjuster at leg end
- Pre shaped legs
- Leg opening with zippers
- Elastic in back waistband for perfect fit





Navy - 498



Black - 900

ART NO 2102800-

W HYBRID VEST

SIZES

XS / S / M / L / XL / XXL

Hybrid vest is a lightweight and packable vest, making it an easy vest to bring in your golf bag (or always keep in your bag as an extra layer for colder days on the course). The vest has a warm down padding in the front and the back. The perfect combination of core warmth and comfortable layering that will keep you warm on the course without sacrificing your game. Great to layer underneath a jacket or on top of a sweater. Hybrid is the golf vest you didn't know you needed but will bring to every game once you have it in your wardrobe. The vest has a narrow fit that gives a slim silhouette. Unsure of what size to choose? Take a look at the size chart for this product.

FEATURES

Fabric: Shell 1:100% Polyester Shell 2: • 90/10 down/feather padded front and back
 100% Polyamide
Fill power: 90/10 down/feather
Laminate: 100% Polyurethane
Size: XS-XXL
Fit: Narrow

DETAILS

- Two hand pockets with zippers
- Bottom hem adjuster
- Lycra tape at armhole
- Micro fleece chin guard



Navy - 498

ART NO 2978541-

W MEDIAN FULL ZIP

If you are looking for a great second layer then look no further, our Median full zip is the way to go. This sweater has a tube collar, side pockets with zippers and a full length zipper at the front. It also has trendy stripes on the arms and on the sides for a sporty look. Great to pair together with a thinner jacket or on top of a polo shirt. The sweater is also mostly made with recycled polyester. Recycled Polyester is obtained by melting down existing plastic, such as fishing nets or plastic bottles and re-spinning it into new polyester fiber. A better choice for the conscious golfer. The sweater has a narrow fit that gives a slim silhouette. Unsure of what size to choose? Take a look at the size chart for this product.

FEATURES

Fabric: 92% RECYCLED POLYESTER
 8% ELASTANE
Size: XS-XXL
Fit: Narrow

DETAILS

- YKK full length zip at front
- Two hand pockets with zippers
- Tube collar

SIZES

XS / S / M / L / XL / XXL





Navy - 498

ART NO 2328341-

W STRIPE ZIP POLO LS

Stripe polo is a half zip, long sleeve sweater made from recycled polyester that works both as a first and second layer. Stripe polo has a tube collar mock neck with stripes going down the sides of the arms and logo underneath the neck yolk. The inside is brushed which makes it feel extremely soft and comfortable on the skin and together with the high stretch quality makes it a perfectly diverse piece for your golf wardrobe. The polo is also mostly made with recycled polyester. Recycled Polyester is obtained by melting down existing plastic, such as fishing nets or plastic bottles and re-spinning it into new polyester fiber. A better choice for the conscious golfer. The polo has a regular fit. A classic cut with a timeless look. Unsure of what size to choose? Take a look at the size chart for this product.

SIZES

XS / S / M / L / XL / XXL



FEATURES

Fabric: 88% RECYCLED POLYESTER 12% ELASTANE

Size: XS-XXL

Fit: Regular

DETAILS

- Zip at front
- print on sleeve
- Tube collar



Lilac Sachet - 451

True Blue - 730

Four Leaf Clover - 850

Black - 900

ART NO 24007298

W GILLIAN CREW NECK

Gillian is a mock neck sweater made in a fully-fashion knit technique. The sweater has a saddle shoulder and the threads are 12 gauge plain knit in 100% cotton, which means they are on the finer side. Made in Italy in a regular fit, this sweater works just as well on the golf course as it does over a shirt at work. A classic cut with a timeless look.

FEATURES

DETAILS

Fabric: 100% COTTON • Plain knit

Size: XS-XXL

Fit: Regular

SIZES

XS / S / M / L / XL / XXL



Lilac Sachet - 451

True Blue - 730

Four Leaf Clover - 850

Black - 900

ART NO 24009298

W GRETA 1/2 ZIP

Greta 1/2 zip is a t-neck sweater made in fully-fashion knit technique with a zipper in the front. The threads are 12 gauge plain knit in 100% cotton, which means they are on the finer side. Made in Italy in a regular fit, this sweater works just as well on the golf course as it does over a shirt at work. A classic cut with a timeless look.

FEATURES

DETAILS

Fabric: 100% Cotton • Plain knit

Size: XS-XXL

Fit: Regular

SIZES

XS / S / M / L / XL / XXL



Lilac Sachet - 451



True Blue - 730



Four Leaf Clover - 850



Black - 900

ART NO 24021298

W GINA V-NECK

Gina is a V-neck sweater made in a fully-fashion knit technique. The sweater has a saddle shoulder and the threads are 12 gauge plain knit in 100% cotton, which means they are on the finer side. Made in Italy in a regular fit, this sweater works just as well on the golf course as it does over a shirt at work. A classic cut with a timeless look.

FEATURES

DETAILS

Fabric: 100% COTTON • Plain knit

Size: XS-XXL

Fit: Regular

SIZES

XS / S / M / L / XL / XXL



White - 106



Blush Beauty - 415



Lilac Sachet - 451



Navy - 498



Chambray Blue - 708



Black - 900

ART NO 23101289

W AMY POLOSHIRT

It does not get any more classic than Amy golf polo. A wardrobe staple that is a must in every golfer's wardrobe. With a classic fit in plain colors with ribbed collar and sleeve ends, it's made with recycled polyester. The fabric is obtained by melting down existing plastic, such as fishing nets or plastic bottles and re-spinning it into new polyester fiber. A better choice for the conscious golfer.

FEATURES

Fabric: 100% RECYCLED

POLYESTER

Size: XS-XXL

Fit: Regular

DETAILS

- Buttons at front
- 1 x 1 rib at collar and cuffs
- Suitable for creasing

SIZES

XS / S / M / L / XL / XXL



White - 106



Raspberry Rose - 475



Navy - 498



Skyway - 707

ART NO 23103289

W AYAKA POLOSHIRT

Ayaka is a traditional lightweight polo shirt with rib in collar, sleeve ends and buttons at front. With an embroidered contrast logo on the chest, it works as well on and off the course. The polo has a regular fit and the recycled polyester that the polo is made from is obtained by melting down existing plastic, such as fishing nets or plastic bottles and re-spinning it into new polyester fiber. A conscious choice with a stylish look.

SIZES

XS / S / M / L / XL / XXL

FEATURES

Fabric: 100%RECYCLED

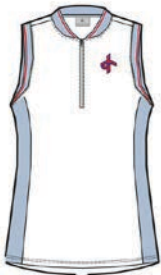
POLYESTER

Size: XS-XXL

Fit: Regular

DETAILS

- Buttons at front
- 1 x 1 rib at collar and cuffs
- Embroidery Logo on chest



White - 106



Lilac Sachet - 451



Navy - 498



Skyway - 707

ART NO 23105289

W ALLY POLOSHIRT

Ally polo is a sleeveless golf top with a ½ zip and rib in collar and sleeve-hole. With its stretchy abilities, it has an optimized fit with side-panel construction in contrast. It has a regular fit and the recycled polyester that the polo is made from is obtained by melting down existing plastic, such as fishing nets or plastic bottles and re-spinning it into new polyester fiber. A conscious choice with a stylish look.

SIZES

XS / S / M / L / XL / XXL

FEATURES

Fabric: 100%RECYCLED

POLYESTER

Size: XS-XXL

Fit: Regular

DETAILS

- Half zipper at front
- stripe on collar and armhole
- Embroidery Logo on chest



White - 106



Lilac Sachet - 451



Navy - 498



Skyway - 707

ART NO 23133289

W ANGELA POLOSHIRT

SIZES

XS / S / M / L / XL / XXL

Angela polo is a short sleeve golf top with a ½ zip and rib in collar and sleeve-hole. With it's stretchy abilities, it has an optimized fit with side-panel construction in contrast. It has a regular fit and the recycled polyester that the polo is made from is obtained by melting down existing plastic, such as fishing nets or plastic bottles and re-spinning it into new polyester fiber. A conscious choice with a stylish look.

FEATURES

Fabric: 100%RECYCLED
POLYESTEER
Size: XS-XXL
Fit: REGULAR

DETAILS

- Half zipper at front
- Embroidery Logo on chest



Raspberry Rose - 475

Navy - 498

Skyway - 707

Four Leaf Clover - 850

Black - 900

ART NO 23109293

W ALEXA POLOSHIRT

SIZES

XS / S / M / L / XL / XXL

Alexa is an elegant lightweight golf polo in a unique jacquard-knitted rib fabric. It has a "drapy" look with stretch and the collar comes in main fabric with buttons at front. The polo is regular fit with turn-ups in the bottom of sleeve and works as well on and off the golf course. The recycled polyester that the polo is made from is obtained by melting down existing plastic, such as fishing nets or plastic bottles and re-spinning it into new polyester fiber. A conscious choice with a classic look.

FEATURES

Fabric: 89% POLYESTER 11% ELASTANE RIB
Size: XS-XXL
Fit: Regular

DETAILS

- Buttons at front
- Rubber logo at left chest



Raspberry Rose - 475

Navy - 498

Skyway - 707

Four Leaf Clover - 850

Black - 900

ART NO 23111293

W ANDREA POLOSHIRT

SIZES

XS / S / M / L / XL / XXL

Andrea is a lightweight sleeveless golf polo in a unique jacquard-knitted rib fabric. It has a "drapy" look with stretch and the collar comes in main fabric with buttons at front. The polo has fitted construction of sleevehole and works as well on and off the golf course. The recycled polyester that the polo is made from is obtained by melting down existing plastic, such as fishing nets or plastic bottles and re-spinning it into new polyester fiber. A conscious choice with a classic look.

FEATURES

Fabric: 89% POLYESTER 11% ELASTANE
Size: XS-XXL
Fit: Regular

DETAILS

- Buttons at front
- Rubber logo at left chest



White - 106



Blush Beauty - 415



Lilac Sachet - 451



Campanula - 720

ART NO 23113291

W ADITI POLOSHIRT

SIZES

XS / S / M / L / XL / XXL

Aditi is a chique allover printed jersey top with binded neck-opening and a button closure. It has a soft touch, nice stretch and the collar comes in contrast. It has a silicone logo on the sleeve and the recycled polyester that the polo is made from is obtained by melting down existing plastic, such as fishing nets or plastic bottles and re-spinning it into new polyester fiber. A conscious choice with a stylish look.

FEATURES

Fabric: 92% RECYCLED POLYESTER 8% ELASTANE
Size: XS-XXL
Fit: Regular

DETAILS

- All over print



White - 106



Blush Beauty - 415



Lilac Sachet - 451



Campanula - 720

ART NO 23115291

W AZAHARA POLOSHIRT

SIZES

XS / S / M / L / XL / XXL

The Azahara is an allover printed sleeveless golf polo in a stretchy jersey material. It comes in regular fit with buttons at front and a contrasting collar. The recycled polyester that the polo is made from is obtained by melting down existing plastic, such as fishing nets or plastic bottles and re-spinning it into new polyester fiber. A conscious choice with a chic look.

FEATURES

Fabric: 92% RECYCLED POLYESTER 8% ELASTANE
Size: XS-XXL
Fit: Regular

DETAILS

- All over print



Blush Beauty - 415



Lilac Sachet - 451



Navy - 498



Agate Gray - 903

ART NO 23117291

W BIANCA POLOSHIRT

SIZES

XS / S / M / L / XL / XXL

Bianca is a chic and stretchy allover printed jersey top in stylish dots. It's regular fit with the collar and plaquet in contrast with a silicone-logo on sleeve. The recycled polyester that the polo is made from is obtained by melting down existing plastic, such as fishing nets or plastic bottles and re-spinning it into new polyester fiber. A conscious choice with a chic look.

FEATURES

Fabric: 92% RECYCLED
POLYESTER 8% ELASTANE

Size: XS-XXL

Fit: Regular

DETAILS

- Buttons at front
- All over print



Blush Beauty - 415



Lilac Sachet - 451



Navy - 498



Agate Gray - 903

ART NO 23119291

W CARLOTA POLOSHIRT

SIZES

XS / S / M / L / XL / XXL

Carlota is an allover printed sleeveless jersey top in stylish dots. In regular fit with a soft touch and stretch, the collar comes in contrast with a half zip on chest and a silicone logo on the side. The recycled polyester that the polo is made from is obtained by melting down existing plastic, such as fishing nets or plastic bottles and re-spinning it into new polyester fiber. A conscious choice with a chic look.

FEATURES

Fabric: 92% RECYCLED
POLYESTER 8% ELASTANE

Size: XS-XXL

Fit: Regular

DETAILS

- Half zipper at front
- Tube collar



Blush Beauty - 415



Raspberry Rose - 475



Navy - 498



Four Leaf Clover - 850

ART NO 23121290

W CHARLEY POLOSHIRT

SIZES

XS / S / M / L / XL / XXL

Charley is an allover printed jersey-top with a soft touch in fading colors. In regular fit, the contrast collar comes in main fabric with a hidden zipper closure and a silicone logo on chest. This polo works just as well on and off the golf course where you require a sporty look with stretching abilities.

FEATURES

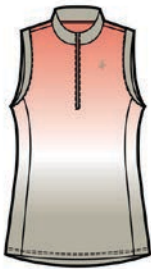
Fabric: 70%RECYCLED POLYESTER
30%POLYESTER

Size: XS-XXL

Fit: Regular

DETAILS

- Half zipper at front
- Rubber logo at left chest



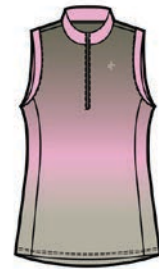
Blush Beauty - 415



Raspberry Rose - 475



Navy - 498



Four Leaf Clover - 850

ART NO 23123290

W ALBANE POLOSHIRT

SIZES

XS / S / M / L / XL / XXL

Albane is a sleeveless golf polo in a jersey fabric. With a soft touch, the allover print in fading colors covers the polo. In regular fit with a standing contrast collar the zipper is hidden on the chest. A sporty look that works just as well outside of the colf course where stretching ability and a cool look is required.

FEATURES

Fabric: 70%RECYCLED POLYESTER
30%POLYESTER

Size: XS-XXL

Fit: Regular

DETAILS

- Half zipper at front
- Tube collar
- Rubber logo at left chest



Blush Beauty - 415



Raspberry Rose - 475



Navy - 498



Four Leaf Clover - 850

ART NO 23125290

W ESTHER POLOSHIRT

SIZES

XS / S / M / L / XL / XXL

Esther is a golf polo in a jersey fabric. With a soft touch, the allover print in fading colors covers the polo. It's a regular fit with a standing contrast collar with the zipper hidden on the chest beside the silicone logo. A sporty look that works just as well outside of the colf course where stretching ability and a cool look is required.

FEATURES

Fabric: 70%RECYCLED POLYESTER
30%POLYESTER

Size: XS-XXL

Fit: Regular

DETAILS

- Half zipper at front
- Tube collar
- Rubber logo at left chest



Lilac Sachet - 451



Navy - 498

ART NO 25505291

W CHELLA DRESS

SIZES

XS / S / M / L / XL / XXL

The Chella is a new stylish golf dress. With hidden zipper and allover print on chest there's a sophisticated construction where the side-panels are meeting the pleats. There are hand pockets with hidden zippers as well as an extra pocket on the side of the under pant that comes with the dress. A sporty look that works just as well outside of the course where stretching ability and a cool look is required.

FEATURES

Fabric: 92% RECYCLED
POLYESTER 8% ELASTANE
Size: XS-XXL
Fit: Regular

DETAILS

- Buttons at front
- Rubber logo at left chest
- extra underpants



Blush Beauty - 415



Navy - 498



Campanula - 720



Agate Gray - 903

ART NO 25504291

W GRACE DRESS

SIZES

XS / S / M / L / XL / XXL

The Grace is a new classic looking golf dress with buttons and collar in main collar. With a silicone logo on the chest, the upper and lower parts are tied together by a traditional and sophisticated construction with pleats. There are hand pockets with hidden zippers as well as an extra pocket on the side of the under pant that comes with the dress. The recycled polyester that the dress is made from is obtained by melting down existing plastic, such as fishing nets or plastic bottles and re-spinning it into new polyester fiber. A conscious choice with a stylish look.

FEATURES

Fabric: 92% RECYCLED
POLYESTER 8% ELASTANE
Size: XS-XXL
Fit: Regular

DETAILS

- Half zipper at front
- Rubber logo at left chest
- extra underpants



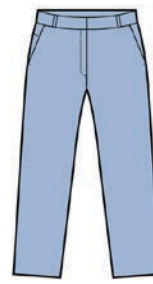
Raspberry Rose - 475



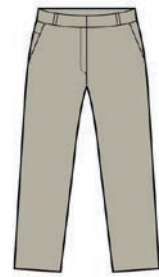
Navy - 498



Black - 900



Chambray Blue - 708



Agate Gray - 903

ART NO 22115294

W LUX CHINOS

Our lightweight Lux chinos are designed for maximum freedom of movement so that you can focus on what matters, your game. The chinos are made of a highly breathable fabric with a 2-way stretch. Lux chinos also have a stretch construction at the waist for superb comfort. Equipped with two front hand pockets and two back pockets. The Lux golf chinos also have a small tee pocket on the outside of the right side pocket because, let's face it, it is always good to have a couple of extra tees on hand. The chinos have a regular fit. A classic cut with a timeless look. Unsure of what size to choose? Take a look at the size chart for this product.

SIZES

34 / 36 / 38 / 40 / 42 / 44 /

FEATURES

Fabric: 75%RECYCLED POLYESTER
25%POLYESTER

Size: 34-46

Fit: Regular

Inseam: 34 = 67 cm, 36/38 = 68 cm,
40/42: 69 cm, 44 =70cm,46=71 cm

DETAILS

- Two front hand pockets
- Small tee pocket outside right side pocket
- Two back pockets
- Stretch construction at waist



Raspberry Rose - 475



Navy - 498



Black - 900



Chambray Blue - 708



Agate Gray - 903

ART NO 22119294

W ROSE PANT

The Rose pant is a new stylish golf pant with improved fit for women that combines performance with elegance. It has a higher back rise, more volume and a wider leg together with darts and back-pockets. There's also a small tee holder outside right side pocket. The recycled polyester the pants are made from is obtained by melting down existing plastic, such as fishing nets or plastic bottles and re-spinning it into new polyester fiber. A conscious choice with a timeless look.

FEATURES

Fabric: 75%RECYCLED POLYESTER
25%POLYESTER
Size: 34-46
Fit: Regular
Inseam: 34 = 67.5 cm, 36=68.5cm, 38 = 69.5 cm, 40=70.5cm,42:=71.5 cm, 44 =72.5cm,46=76.5 cm

DETAILS

- Two front hand pockets
- Small tee pocket outside right side pocket
- Two back pockets
- Stretch construction at waist

SIZES

34 / 36 / 38 / 40 / 42 / 44 / 46



Navy - 498



Blush Beauty - 415



Raspberry Rose - 475



Agate Gray - 903

ART NO 22601291

W STELLA SKORT

A skort is a must in every golfer's wardrobe. Our Stella skort is made in a technical and soft fabric with a 4-way stretch. This golf skort will never cling to your skin or feel damp, giving you the maximum comfort on the course. Stella skort has inner shorts, a practical back pocket and rib at the waist. The skort is also mostly made with recycled polyester. Recycled Polyester is obtained by melting down existing plastic, such as fishing nets or plastic bottles and re-spinning it into new polyester fiber. A better choice for the conscious golfer. The skort has a regular fit. A classic cut with a timeless look. Unsure of what size to choose? Take a look at the size chart for this product.

FEATURES

Fabric: 92% RECYCLED
POLYESTER 8% ELASTANE
Size: XS-XXL
Fit: Regular

DETAILS

- One back pockets
- Inner shorts
- All over print

SIZES

34 / 36 / 38 / 40 / 42 / 44 / 46 / XS / S / M / L / XL /
XXL



Navy - 498



Raspberry Rose - 475



Four Leaf Clover - 850

ART NO 22603291

W STELLA SKORT LONG

Our Stella golf skort is a must in every golfer's wardrobe. Stella Skort is produced in a technical and soft fabric with a 4-way stretch. It will never stick to your skin or feel damp but will on the other hand give you maximum comfort on the course. Stella skort has inner shorts, a practical back pocket and rib at the waist. This golf skort is also a bit longer than our regular golf skirts. The skort is also mostly made with recycled polyester. Recycled Polyester is obtained by melting down existing plastic, such as fishing nets or plastic bottles and re-spinning it into new polyester fiber. A better choice for the conscious golfer. The skort has a regular fit. A classic cut with a timeless look. Unsure of what size to choose? Take a look at the size chart for this product.

SIZES

34 / 36 / 38 / 40 / 42 / 44 / 46 / XS / S / M / L / XL / XXL

FEATURES

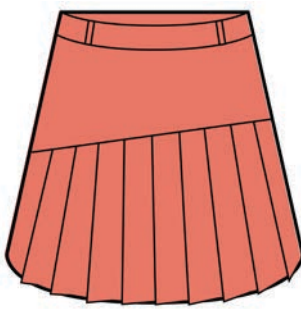
Fabric: 92% RECYCLED POLYESTER 8% ELASTANE
Size: XS-XXL
Fit: Regular

DETAILS

- One back pockets
- Inner shorts
- All over print



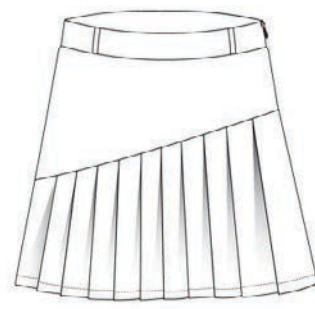
Navy - 498



Blush Beauty - 415



Raspberry Rose - 475



ART NO 22606296

W SOLID PLEAT SKORT

A skort is a must in every golfer's wardrobe. Our Solid Pleat skort is a lightweight and soft pleat skort especially designed for the high demands and flexibility required for your golf swing. The golf skort has a practical back pocket and comfortable inner shorts for a superb fit. It opens with a zipper on the side. The skirt is also mostly made of recycled polyester. Recycled polyester is produced by melting down existing plastic, such as fishing nets or plastic bottles, and re-spinning it into new polyester fibers. A better and more sustainable choice for the conscious golfer. The skort has a regular fit. A classic cut with a timeless look. Unsure of what size to choose? Take a look at the size chart for this product.

SIZES

34 / 36 / 38 / 40 / 42 / 44 / 46

FEATURES

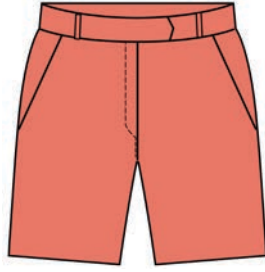
Fabric: 92% RECYCLED POLYESTER 8% ELASTANE
Size: 34-46
Fit: Regular

DETAILS

- One back pocket
- Side zipper
- Inner shorts



Navy - 498



Blush Beauty - 415



Black - 900



Agate Gray - 903

ART NO 22605294

SIZES

34 / 36 / 38 / 40 / 42 / 44 / 46

W STYLE SHORTS LONG

A skort is a must in every golfer's wardrobe. Our Solid Pleat skort is a lightweight and soft pleat skort especially designed for the high demands and flexibility required for your golf swing. The golf skort has a practical back pocket and comfortable inner shorts for a superb fit. It opens with a zipper on the side. The skirt is also mostly made of recycled polyester. Recycled polyester is produced by melting down existing plastic, such as fishing nets or plastic bottles, and respinning it into new polyester fibers. A better and more sustainable choice for the conscious golfer. The skort has a regular fit. A classic cut with a timeless look. Unsure of what size to choose? Take a look at the size chart for this product.

FEATURES

Fabric: 75%RECYCLED POLYESTER
25%POLYESTER
Size: 34-46
Fit: Regular
Inseam: 34 = 26 cm, 36/38 = 27 cm,
40/42=28 cm, 44=29 cm,46=30cm

DETAILS

- Two front hand pockets
- Two back pockets

ACCESSORIES

GOLF

SS25

SPRING / SUMMER 2025 COLLECTION

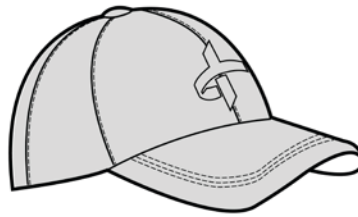
CROSS SPORTSWEAR



cross|sportswear



Black - 900



Pebble Grey - 814



Navy - 498

ART NO 4536600-

CROSS CAP

SIZES

OneSize

Classic cap made in cotton twill with an embroidered Cross Sportswear logo at the front and a text logo at the side. The cap also has two eyelets for ventilation at the top.

FEATURES

Fabric: 100% Cotton twill
Size: One size

DETAILS

- Eyelets for ventilation at top
- Embroidered logo at front



Black - 900

ART NO 4586600-

NILS HAT

SIZES

S / M / L

A classic bucket hat that is also waterproof. Suitable and stylish whenever but, most practical during rainy days with windy weather. For measurements, please see below: S (inside length) = 54.5 CM M (inside length) = 57 CM L (inside length) = 59.5 CM

FEATURES

Fabric: 100% Polyester
Laminate: 100% Polyurethane
Size: S-L

DETAILS

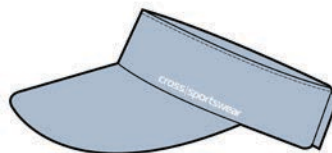




Blush Beauty - 415



Lilac Sachet - 451



Skyway - 707

ART NO 4588100-

W VISOR III

SIZES

OneSize

Our classic visor will keep your hairstyle in place and the sun out of your eyes. The visor is also mostly made with recycled polyester. Recycled Polyester is obtained by melting down existing plastic, such as fishing nets or plastic bottles and re-spinning it into new polyester fiber. A better choice for the conscious golfer.

FEATURES

Fabric: 92% recycled polyester 8% elastane

Size: One size

DETAILS

- Logotype at front and on the side



Navy - 498



Black - 900

ART NO 4586500-

STORM HAT

SIZES

S / M / L

Our Storm hat is the go-to hat when the weather is not the best. During rainy days with lots of wind, this is the hat to bring. It will most definitely keep you feeling better on the course than if you left it at home. For measurements, please see below: S (inside length) = 56 CM M (inside length) = 59 CM L (inside length) = 62 CM

FEATURES

Fabric: 100% Polyester

Laminate: 100% Polyurethane

Size: S-L

DETAILS



SIZE CHART

MEN'S SIZES

MEN'S SIZE	XS		S		M		L		XL		XXL	
INCH	28"		30"	31"	32"	33"	34"	36"	38"		40"	
SIZE CONVERTER												
EUROPE	42		44	46	48		50	52	54		56	58
CH, FR, ES	34		36	38	40		42	44	46		48	50
UK, US, CA	32		34	36	38		40	42	44		46	48
CN top	165/84A		170/88A	170/92A	175/96A		180/100A	180/104A	185/108A		185/112A	185/116A
CN bottom	165/72A		170/76A	170/80A	175/84A		180/88A	180/92A	185/96A		185/100A	185/104A
BODY MEASUREMENTS IN CM												
A. CHEST BODY IN CM	84	88	90	94	96	100	102	106	108	112	114	118
B. WAIST BODY IN CM	70	74	76	80	82	86	88	92	94	98	100	104
C. SEAT BODY IN CM	87	91	93	97	99	103	105	109	111	115	117	121
D. REGULAR INNER LEG LENGTH	86,5		88		89,5		91		92,5		94	
BODY MEASUREMENTS IN INCH												
A. CHEST BODY IN INCH	33	34 2/3	35 1/2	37	37 3/4	39 1/3	40	41 3/4	42 1/2	44	45	46 1/2
B. WAIST BODY IN INCH	27 1/2	29	30	31 1/2	32 1/4	33 3/4	34 2/3	36 1/3	37	38 1/2	39 1/3	41
C. SEAT BODY IN INCH	34 1/4	35 3/4	36 2/3	38	39	40 1/2	41 1/3	42 3/4	43 2/3	45 1/4	46	47 2/3
D. REGULAR INNER LEG LENGTH	34		34 1/2		35 1/4		35 3/4		36 1/3		37	

WOMEN'S SIZES

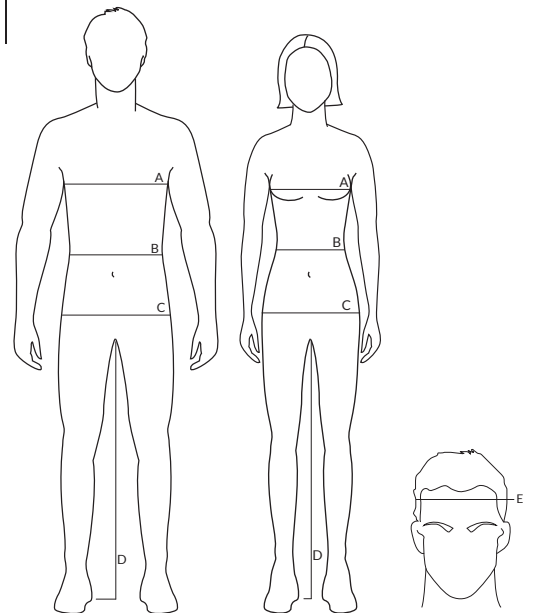
WOMEN'S SIZE	XS		S		M		L		XL	
EUROPEAN SIZE	34		36		38	40	42		44	46
SIZE CONVERTER										
CH, FR, ES	36		38		40	42	44		46	48
ITALY	36		40		42	44	46		48	50
UK	6		8		10	12	14		16	18
US, CA	4		6		8	10	12		14	16
CN top	155/80A		160/84A		165/88A	165/92A	170/92A		175/96A	175/100A
CN bottom	155/64A		160/68A		165/72A	165/76A	170/76A		175/80A	175/84A
BODY MEASUREMENTS IN CM										
A. CHEST BODY IN CM	78	82	84	88	90	94	96	100	102	106
B. WAIST BODY IN CM	62	66	68	70	72	76	78	82	84	88
C. SEAT BODY IN CM	87	91	93	95	97	101	103	107	109	113
D. REGULAR INNER LEG LENGTH	85		86,5		88	88,5	89,5		91	
BODY MEASUREMENTS IN INCH										
A. CHEST BODY IN INCH	30 2/3	32 1/4	33	34 2/3	35 1/3	37	37 3/4	39 1/3	40	41 3/4
B. WAIST BODY IN INCH	24 1/2	26	26 3/4	27 1/2	28 1/3	30	30 2/3	32 1/3	33	34 2/3
C. SEAT BODY IN INCH	34 1/4	35 3/4	36 2/3	37 1/3	38	39 3/4	40 1/2	42	43	44 1/2
D. REGULAR INNER LEG LENGTH	33 1/3		34		34 2/3	35 1/4	35 2/3		36 1/3	

HEADGEAR SIZES

CROSS SIZE	XS		S/M		L/XL	
SIZE CONVERTER						
F. HEAD MEASURE IN CM	52	53	54	56	57	60

HOW & WHERE TO MEASURE

- a. Chest (body) in cm/in Round widest part of chest
- b. Waist (body) in cm/in Round slimmest part of waist
- c. Seat (body) in cm/in Round widest part of bottom
- d. Inner leg length (inseam) From crotch to floor
- e. Head around in cm/in Round widest point of head





cross|sportswear

DISTRIBUTED IN CANADA BY

THE
WESTPORT
COMPANY

BC

Steve Mason

1.778.251.2784

stevemasonsales@gmail.com



Alberta

Daniela Pacheco

1.587.999.1060

dani-pacheco@telus.net



Ontario

Paul Kraus

1.416.884.6841

paulkraus55@gmail.com



Quebec & Maritimes

Emmanuel Autran

1.514.262.5994

emmanuel.autran@agencecea.com



Head Office

Aaren McMahon

1.437.246.8821

aaren@thewestportcompany.ca



3250 BLOOR ST WEST, SUITE 600, TORONTO, ON M8X 2X9

THEWESTPORTCOMPANY.CA